

Meet with our dedicated Sales Team at Booth P-1 G51

Céline Payot LEHMANN, Audrey KAMGA,
Isabelle MONTEIL, Franka SCHWABE & Sophie SOGHOMONIAN

Contact: infosales@arteFrance.fr

Screening online: sales.arte.tv

ART & CULTURE



ARTE TRIPS: A BAR IN THE FOLIES BERGERES by EDOUARD MANET 7'

Behold an experience that will offer you an educating and spectacular plunge into Manet's famous painting. Thanks to VR, the spectator will in turn view Edouard Manet, his model Suzon, the patron who gazes at her and the Gallery visitor's perspective.

Also available: *THE ISLE OF THE DEAD*:

A voyage into the unknown, based on Arnold BÖCKLIN's work, in a seemingly banal apartment : within a few minutes, civilisation disintegrates, buildings crumble, the earth is flooded and we find ourselves in company of a boatman who guides us to the isle of the dead.

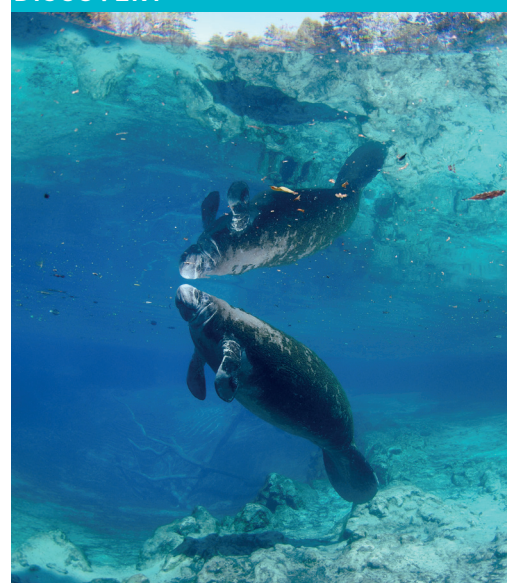


SMART SECRETS OF GREAT PAINTINGS - THE WEDDING AT CANA BY PAOLO VERONESE 5'

The painter transposes the biblical tale of Christ's first miracle to the scene of a sumptuous Venetian banquet.

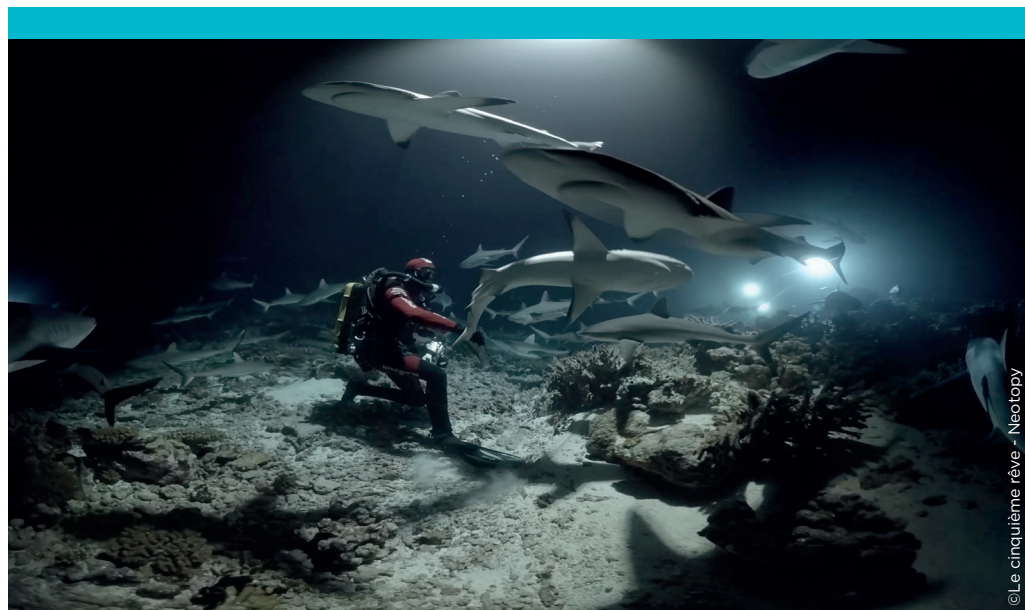
Also available: *LAS MENINAS BY DIEGO VELASQUEZ*.

DISCOVERY



+/- 5 METERS 5x2'

Joe Bunni immerses us in the perfect diving experience from his perspective. This voyage beneath the sea feels like flying! But this fascinating universe is fragile and Joe intends to alert us to the dangers of pollution.



INTO THE SHARK PACK 6' - 700 SHARKS 6'

A 4K special in which we dive for the first time by night into a feeding frenzy of 700 sharks in Polynesia, the largest concentration of sharks in the world. Filmed with underwater 4K cameras, drones, Gopro black for "bullet time" effect, high speed cameras to capture the best predation scenes that last less than a second. An unbelievable experience that will change your knowledge of shark behavior.



MONUMENTS OF LEGEND: THE CASTLE OF FONTAINEBLEAU 4x8'

Discover the hidden artistic treasures behind the construction of iconic monuments, how they fit into art history and have been preserved until today.

This VR collection offers an immersive experience at the heart of art history and invites you to an erudite and playful dive, in the rooms and gardens of the castle of Fontainebleau.

Also available : *THE TREASURES OF AIX LA CHAPPELLE, WAGNER'S OPERA IN BAYREUTH AND THE GROTTES CHAUVET.*

GEO 360° DISCOVERY

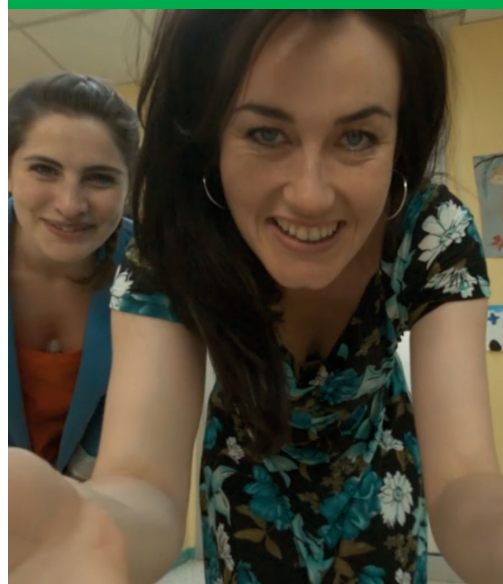


WINTER IN VENICE - A WOMAN POLICE OFFICER, A MAN WITH THE MASK AND A VERDI MELODY 5'

In Venice it is always high season, except for a few days in January when heavy rain, high waters and cold weather take hold of the city. It is during these January days that the unique Venetian way of life reveals itself.

Also available: *EXPLORING MONT BLANC, BAY OF BISCAYA AND MAJESTIC MOUNTAINS OF MARBLE OF MICHELANGELO.*

EXPERIMENTAL



LIFE TO COME THROUGH THE EYES OF A PREMATURE BABY 12'40

Eve is a premature baby. This immersive experience puts the audience in Eve's point of view: surrounded by medical staff, loved by caring parents, in direct contact with a world all new to her, we experience the challenge of the beginning of life.