

arteSALES

THE ULTIMATE REFERENCE IN DOCUMENTARY DISTRIBUTION



MAPPING THE WORLD Series
April 2018

CONTACTS

CELINE PAYOT LEHMANN
Head of International Distribution
c-payot-lehmann@arteFrance.fr
+ 33 1 55 00 70 94

ALEC HERRMANN
Head of Catalog and Video Acquisitions (DVD-VOD)
a-herrmann@arteFrance.fr
+ 33 1 55 00 73 22

AUDREY KAMGA
Sales Manager
a-kamga@arteFrance.fr
+ 33 1 55 00 70 81

ISABELLE MONTEIL
Sales Manager
i-monteil@arteFrance.fr
+ 33 1 55 00 72 59

FRANKA SCHWABE
Sales Manager
f-schwabe@arteFrance.fr
+ 33 1 55 00 72 68

SOPHIE SOGHOMONIAN
Sales Manager
s-soghomonian@arteFrance.fr
+ 33 1 55 00 70 82

arteSALES

SALES.ARTE.TV

8 RUE MARCEAU 92784 ISSY-LES-MOULINEAUX CEDEX 9 FRANCE
+33 1 55 00 77 77
INFOSALES@ARTEFRANCE.FR

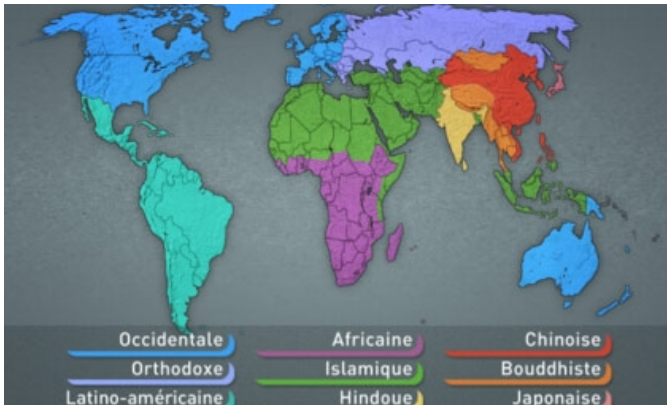
THEMATIC INDEX

CURRENT AFFAIRS

CURRENT AFFAIRS

MAPPING THE WORLD NEW	8
MAPPING THE WORLD - INTRA-AFRICAN MIGRATIONS NEW	8
MAPPING THE WORLD - ROHINGYAS, BIRMANIS AND MUSLIMS NEW	8
MAPPING THE WORLD - SAVE THE OCEANS NEW	8
MAPPING THE WORLD - WEAPONS, A GROWING BUSINESS NEW	9
MAPPING THE WORLD: NEW GUINEA: FORGOTTEN CONFLICT NEW	9
MAPPING THE WORLD - AMAZONIA: THE PLANET'S LUNG NEW	9
MAPPING THE WORLD - BALUCHISTA : A STRATEGIC AREA BETWEEN CHINA AND INDIA NEW	9
MAPPING THE WORLD - BOKO HARAM AFTER THE ISLAMIC STATE NEW	10
MAPPING THE WORLD - CAN WE UNDERSTAND NORTH KOREA? NEW	10
MAPPING THE WORLD - CANNABIS A GLOBAL MARKET NEW	10
MAPPING THE WORLD - CATALONIA THE SPANISH IMBROGLIO NEW	10
MAPPING THE WORLD - CHINA: THE TIBET ISSUE NEW	11
MAPPING THE WORLD - CITIES: NEVER WITHOUT MY CAR? NEW	11
MAPPING THE WORLD - ENDANGERED SAND NEW	11
MAPPING THE WORLD - GEOPOLITICS OF MOSQUITOES NEW	11
MAPPING THE WORLD - HONG KONG RETURNS TO CHINA NEW	12
MAPPING THE WORLD - KAZAKHSTAN: A BRIDGE BETWEEN CHINA AND EUROPE NEW	12
MAPPING THE WORLD - KURDISTAN(S)? NEW	12
MAPPING THE WORLD - LIBYA: THE REASONS BEHIND THE CHAOS NEW	12
MAPPING THE WORLD - RUSSIA/CHINA: AN UNUSUAL RELATIONSHIP NEW	13
MAPPING THE WORLD - RWANDA, A MIRACLE AFTER THE GENOCIDE NEW	13
MAPPING THE WORLD - SAUDI ARABIA, TRUE POLITICAL OPENNESS OR MERE WINDOW DRESSING? NEW	13
MAPPING THE WORLD - TOMORROW, THE END OF COAL? NEW	13
MAPPING THE WORLD - UKRAINE, A CROSSROADS OF INFLUENCE NEW	14
MAPPING THE WORLD - UNDERWATER CABLES: THE INVISIBLE WAR NEW	14
MAPPING THE WORLD - WHEN SPORT BECOMES POLITICAL NEW	14
MAPPING THE WORLD - WHO DEFENDS EUROPE ? NEW	14
MAPPING THE WORLD - WINE GOES GLOBAL NEW	15

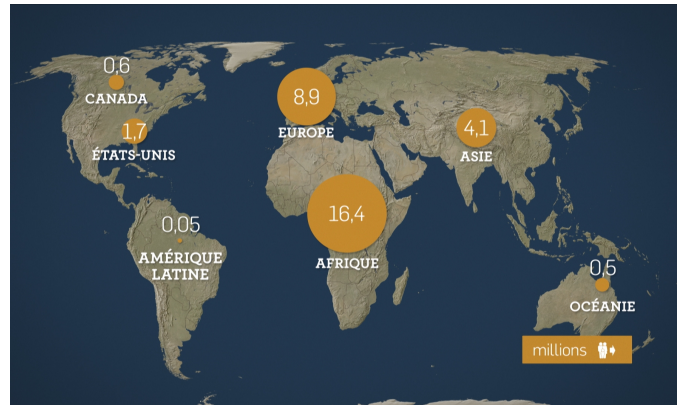




MAPPING THE WORLD 30x12' - 2018 - NEW

For the last 10 years, this geopolitical magazine is studying major players and power games at stake in our contemporary world, with maps as a tool for understanding international complexities.

PRODUCERS : ARTE FRANCE, ARTE FRANCE DEVELOPPEMENT



MAPPING THE WOLRD - INTRA-AFRICAN MIGRATIONS 12' - 2017 - NEW

Contrary to received wisdom in Europe, the majority of African migrants do not cross the Mediterranean. Most reside in another African country. How do African Union host countries deal with migrants and refugees?

PRODUCER : ARTE FRANCE DEVELOPPEMENT

DIRECTOR : FRÉDÉRIC LERNOUD

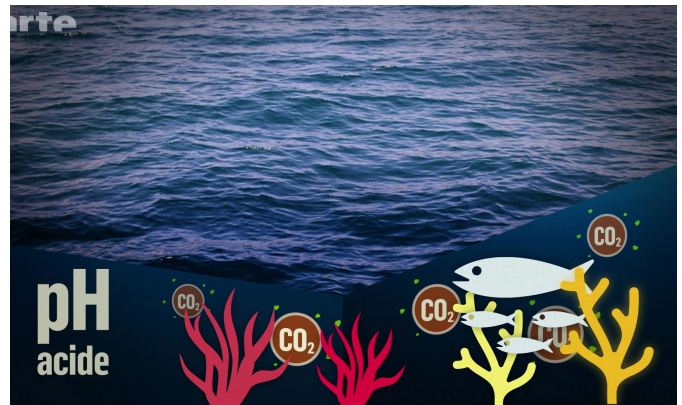


MAPPING THE WOLRD - ROHINGYAS, BIRMANIS AND MUSLIMS 12' - 2017 - NEW

According to the UN, the Rohingya, the Muslims of the Rakhine state in Burma, are the most persecuted people in the world.

PRODUCER : ARTE FRANCE DEVELOPPEMENT

DIRECTOR : JUDITH RUEFF



MAPPING THE WOLRD - SAVE THE OCEANS 12' - 2018 - NEW

Our ocean are ill, and it's our own fault. What can we do to avoid disaster?

PRODUCER : ARTE FRANCE DEVELOPPEMENT

DIRECTOR : FREDERIC LERNOUX



MAPPING THE WORLD - WEAPONS, A GROWING BUSINESS 12' - 2017 - **NEW**

Almost everywhere in the world over the last 2 years military budgets have increased. The world has never had such a massive stock of weapons. Mapping the World takes us into the detail.

PRODUCER : ARTE FRANCE DEVELOPPEMENT

DIRECTOR : FRÉDÉRIC LERNOUD



MAPPING THE WORLD: NEW GUINEA: FORGOTTEN CONFLICT 12' - 2018 - **NEW**

Since New Guinea became an Indonesian province in 1963, the Papuans have been calling for their independence. What future awaits for this region, half a century after its integration into Indonesia?

PRODUCER : ARTE FRANCE DEVELOPPEMENT

DIRECTOR : FRÉDÉRIC LERNOUD



MAPPING THE WORLD - AMAZONIA: THE PLANET'S LUNG 12' - 2017 - **NEW**

Amazonia - the world's green lung - hosts both the biggest equatorial forest and the biggest river system in the world. But humanity's common legacy is actually split between eight states - over 40% of South America.

PRODUCER : ARTE FRANCE DEVELOPPEMENT

DIRECTOR : PIERRE OLIVIER FRANCOIS

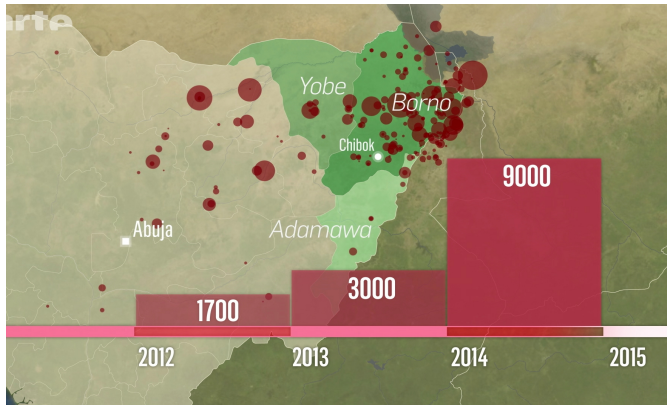


MAPPING THE WORLD - BALUCHISTA : A STRATEGIC AREA BETWEEN CHINA AND INDIA 12' - 2017 - **NEW**

Baluchistan is a region that is rarely heard of. Straddling three countries, Iran, Afghanistan and Pakistan, it is the backdrop for a battle of wills between India and China.

PRODUCER : ARTE FRANCE DEVELOPPEMENT

DIRECTOR : MATHIEU DECARLY



MAPPING THE WORLD - BOKO HARAM AFTER THE ISLAMIC STATE 12' - 2017 - NEW

The group Boko Haram was created in Nigeria at the start of the 2000s. At the start it was only a militant yet non-violent religious group.

PRODUCER : ARTE FRANCE DEVELOPPEMENT
DIRECTOR : OLIVIER MARQUEZY



MAPPING THE WORLD - CAN WE UNDERSTAND NORTH KOREA? 12' - 2017 - NEW

In the eyes of the international community, North Korea threatens the world - more specifically its Japanese, South Korean and American neighbors. And indeed since Kim Jong Un - third heir to this unique communist dynasty - inherited power in 2011, his regime has tested 98 missiles and four atomic b...

PRODUCER : ARTE FRANCE DEVELOPPEMENT
DIRECTOR : PIERRE OLIVIER FRANCOIS



MAPPING THE WORLD - CANNABIS A GLOBAL MARKET 12' - 2017 - NEW

What is the economic impact of legalisation? The global cannabis market is evolving. How is it organised between producer and consumer countries?

PRODUCER : ARTE FRANCE DEVELOPPEMENT
DIRECTOR : FRÉDÉRIC LERNOUD

MAPPING THE WORLD - CATALONIA THE SPANISH IMBROGLIO 12' - 2018 - NEW

Spain is on the verge of a nervous breakdown... Catalonia - the richest region in the country - has just unilaterally declared its independence. Is it just a bluff, a bet or is it a bombshell?

PRODUCER : ARTE FRANCE DEVELOPPEMENT
DIRECTOR : BENOÎT LABORDE

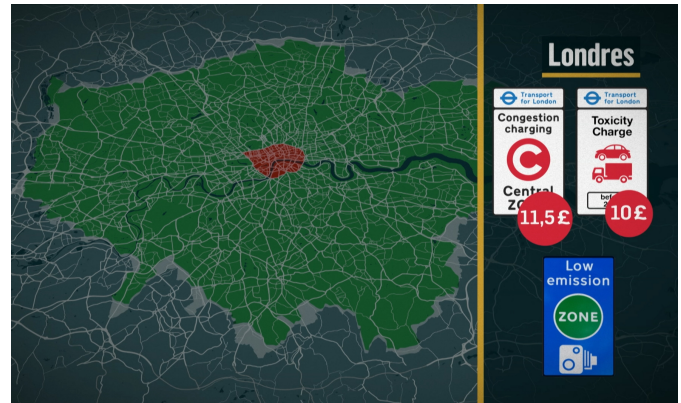


MAPPING THE WORLD - CHINA: THE TIBET ISSUE 12' - 2018 - **NEW**

The Tibetan plateau is a natural area that is unique in the world. Beyond the tensions between the Dalai Lama and Beijing, it is marked by a Chinese policy of major works aiming to benefit from its numerous resources. But the Tibetan plateau's exploitation might endanger this fragile ecosystem.

PRODUCER : ARTE FRANCE DEVELOPPEMENT

DIRECTOR : FRÉDÉRIC LERNOUD

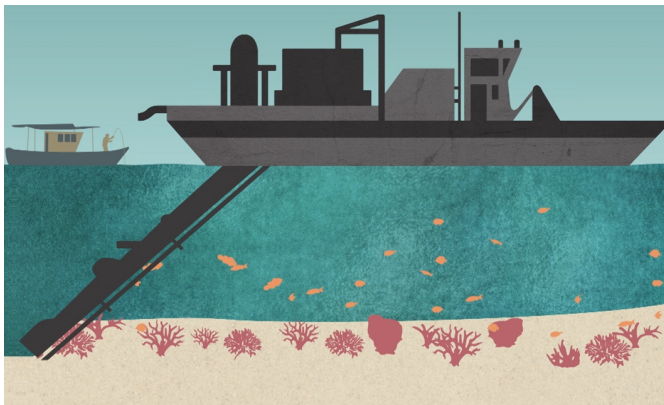


MAPPING THE WORLD - CITIES: NEVER WITHOUT MY CAR? 12' - 2018 - **NEW**

If cities on a global scale are attractive for people it is because they concentrate economic activities and everyday comfort. But the growing urbanization causes metropolises to sprawl ever more...

PRODUCER : ARTE FRANCE DEVELOPPEMENT

DIRECTOR : FRÉDÉRIC LERNOUD



MAPPING THE WORLD - ENDANGERED SAND 12' - 2017 - **NEW**

Sand is the most used raw material in the world after air and water. Whether in the waters, the deserts or the rivers, it seems like we will never run out of it. And yet we are missing some everywhere - to make concrete, cities, cutting-edge technologies, polders, artificial islands, etc.

PRODUCER : ARTE FRANCE DEVELOPPEMENT

DIRECTOR : MATHIEU DECARLI



MAPPING THE WORLD - GEOPOLITICS OF MOSQUITOES 12' - 2018 - **NEW**

Chikungunya and dengue fevers, malaria, Zika - all these epidemics share a common factor: they are disseminated by mosquitoes. This program is inspired by Eric Orsenna's book "Geopolitics of the Mosquitoes". Discover the story of a highly adaptive insect that is also a tireless traveler.

PRODUCER : ARTE FRANCE DEVELOPPEMENT

DIRECTOR : JUDITH RUEFF



MAPPING THE WORLD - HONG KONG RETURNS TO CHINA 12' - 2018 - **NEW**

20 years after the handover, where is Hong Kong at? We examine the capitalist flagship facing China. After being a subsidized showcase of the Western world in front of Red China for the entire Cold War, the "special economic region" is now more and more integrated into a Chinese superpower that larg...

PRODUCER : ARTE FRANCE DEVELOPPEMENT
DIRECTOR : PIERRE OLIVIER FRANCOIS



MAPPING THE WORLD - KAZAKHSTAN: A BRIDGE BETWEEN CHINA AND EUROPE 12' - 2018 - **NEW**

Kazakhstan is the country of steppes - splendid landscapes as far as the eye can see; an awe inspiring source of unbridled freedom. But reality is starkly different. The country has long been under Russian sway - whether the Tsars' or the USSR's.

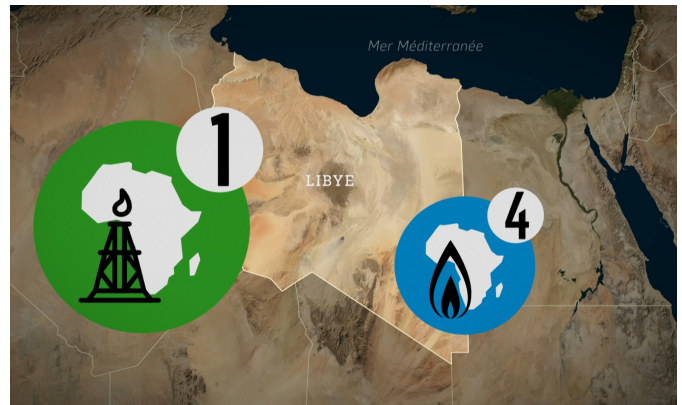
PRODUCER : ARTE FRANCE DEVELOPPEMENT
DIRECTOR : JULIE GAVRAS



MAPPING THE WORLD - KURDISTAN(S)? 12' - 2018 - **NEW**

Kurdistan means "Land of the Kurds". Numbering around 32 to 35 million, the Kurds are currently the biggest stateless ethnic group in the world.

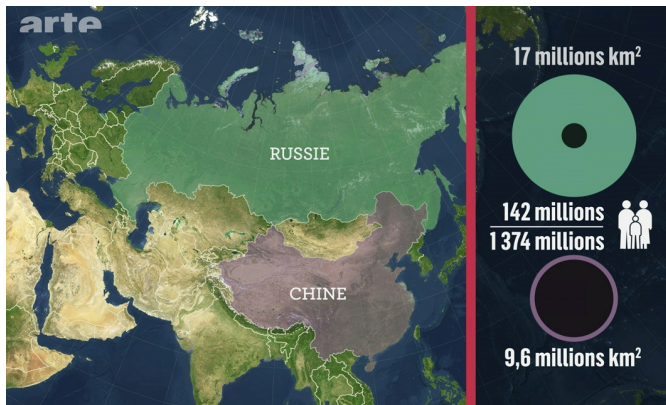
PRODUCER : ARTE FRANCE DEVELOPPEMENT
DIRECTOR : PIERRE OLIVIER FRANCOIS



MAPPING THE WORLD - LIBYA: THE REASONS BEHIND THE CHAOS 12' - 2018 - **NEW**

Since the fall of Gaddafi in 2011, Libya has known deep and permanent political instability. The United Nations are committed to seeking a positive outcome to the chaos and violence on the ground; thanks to the organization of elections in 2018. But the political context renders this perspective hig...

PRODUCER : ARTE FRANCE DEVELOPPEMENT
DIRECTOR : FRÉDÉRIC LERNOUD

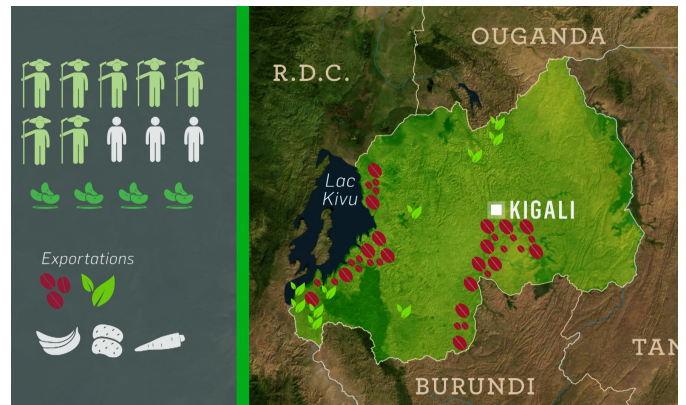


MAPPING THE WORLD - RUSSIA/CHINA: AN UNUSUAL RELATIONSHIP 12' - 2018 - **NEW**

Russia and China are two giants brought together by 4.200 kilometers of common border. Their long and storied relationship is ever shifting - from maintaining the power balance (sometimes violently) to having common interests.

PRODUCER : ARTE FRANCE DEVELOPPEMENT

DIRECTOR : MATHIEU DECARLY



MAPPING THE WORLD - RWANDA, A MIRACLE AFTER THE GENOCIDE 12' - 2018 - **NEW**

24 years after the genocide, what has become of Rwanda? Strong economic growth, numerous foreign investments, poverty rates falling, education put foremost: the results have been impressive.

PRODUCER : ARTE FRANCE DEVELOPPEMENT

DIRECTOR : JUDITH RUEFF

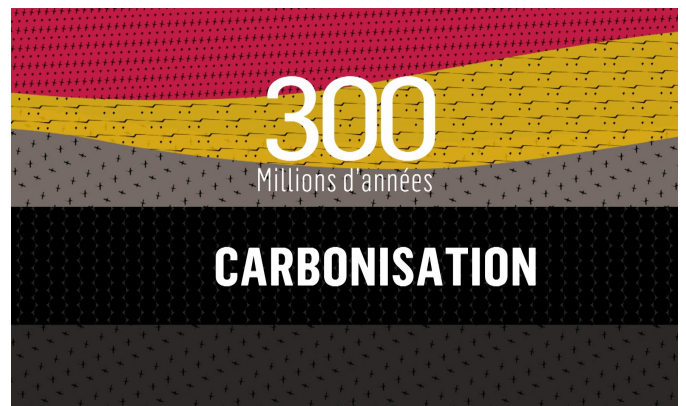


MAPPING THE WORLD - SAUDI ARABIA, TRUE POLITICAL OPENNESS OR MERE WINDOW DRESSING? 12' - 2018 - **NEW**

In the Saudi Kingdom not a week goes by without another announcement by the young crown prince Mohammad bin Salman. Domestic policy, economy, society, diplomacy: the successive reforms play out at a frenetic pace - but where is Saudi Arabia truly headed?

PRODUCER : ARTE FRANCE DEVELOPPEMENT

DIRECTOR : BENOÎT LABORDE



MAPPING THE WORLD - TOMORROW, THE END OF COAL? 12' - 2017 - **NEW**

At a time when renewable energies, oil and gas are predominant, coal still holds a pivotal role in the global energy mix. Its high concentration in carbon gives it a high calorific value - and thus a very good performance.

PRODUCER : ARTE FRANCE DEVELOPPEMENT

DIRECTOR : OLIVIER MARQUEZY



MAPPING THE WORLD - UKRAINE, A CROSSROADS OF INFLUENCE 12' - 2017 - NEW

The divisions of Ukraine are ancient, and are explained by its location, at the crossroads of two very different worlds. Between Russia and the West, Ukraine is torn between two political, economic and cultural models.

PRODUCER : ARTE FRANCE DEVELOPPEMENT
DIRECTOR : JUDITH RUEFF



MAPPING THE WORLD - UNDERWATER CABLES: THE INVISIBLE WAR 12' - 2018 - NEW

There are about 400 underwater cables weaving an invisible yet crucial network in today's age. With a length of 1,3 million kilometers they are vital to the correct functioning of internet and host about 99% of our intercontinental exchanges.

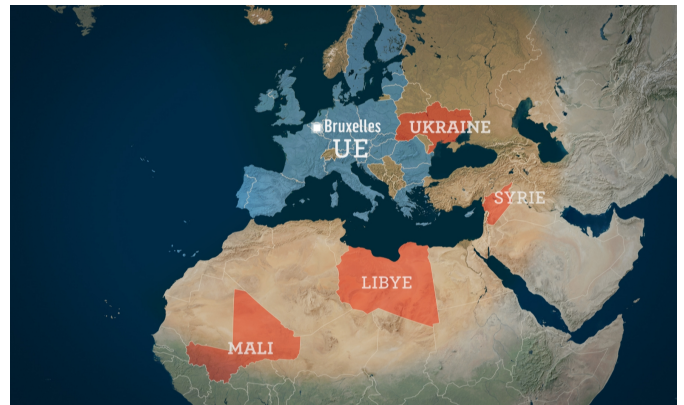
PRODUCER : ARTE FRANCE DEVELOPPEMENT
DIRECTOR : PIERRE OLIVIER FRANCOIS



MAPPING THE WORLD - WHEN SPORT BECOMES POLITICAL 12' - 2017 - NEW

What if sport had become a political tool on the global scale? The Olympics were once seen as an image of state power - prolonging wars on the playing fields. You will discover that there are indeed "sport geopolitics" in the era of the globalization of "soft power".

PRODUCER : ARTE FRANCE DEVELOPPEMENT
DIRECTOR : JUDITH RUEFF



MAPPING THE WORLD - WHO DEFENDS EUROPE ? 12' - 2018 - NEW

For the last 67 years no EU member has declared war on another. However, international conflicts, terrorism, the refugee crisis and cyberwarfare threatens its stability. Does Europe want to build an independent defence force?

PRODUCER : ARTE FRANCE DEVELOPPEMENT
DIRECTOR : PIERRE OLIVIER FRANCOIS



MAPPING THE WORLD - WINE GOES GLOBAL 12'
- 2018 - **NEW**

In China, the French are producing a Cabernet-sauvignon, the Australian Shiraz is exported around the world and the Hungarian Tokaj wine region has Italian, Spanish and American investors. The globalisation of wine has arrived.

PRODUCER : ARTE FRANCE DEVELOPPEMENT

DIRECTOR : JUDITH RUEFF

ALPHABETICAL INDEX

MAPPING THE WOLRD: NEW GUINEA: FORGOTTEN CONFLICT.....	9
MAPPING THE WOLRD - INTRA-AFRICAN MIGRATIONS.....	8
MAPPING THE WOLRD - ROHINGYAS, BIRMANS AND MUSLIMS.....	8
MAPPING THE WOLRD - SAVE THE OCEANS.....	8
MAPPING THE WOLRD - WEAPONS, A GROWING BUSINESS.....	9
MAPPING THE WORLD.....	8
MAPPING THE WORLD - AMAZONIA: THE PLANET¿S LUNG	9
MAPPING THE WORLD - BALUCHISTA : A STRATEGIC AREA BETWEEN CHINA AND INDIA.....	9
MAPPING THE WORLD - BOKO HARAM AFTER THE ISLAMIC STATE.....	10
MAPPING THE WORLD - CANNABIS A GLOBAL MARKET.....	10
MAPPING THE WORLD - CAN WE UNDERSTAND NORTH KOREA?.....	10
MAPPING THE WORLD - CATALONIA THE SPANISH IMBROGLIO.....	10
MAPPING THE WORLD - CHINA: THE TIBET ISSUE.....	11
MAPPING THE WORLD - CITIES: NEVER WITHOUT MY CAR?.....	11
MAPPING THE WORLD - ENDANGERED SAND.....	11
MAPPING THE WORLD - GEOPOLITICS OF MOSQUITOES.....	11
MAPPING THE WORLD - HONG KONG RETURNS TO CHINA.....	12
MAPPING THE WORLD - KAZAKHSTAN: A BRIDGE BETWEEN CHINA AND EUROPE.....	12
MAPPING THE WORLD - KURDISTAN(S)?.....	12
MAPPING THE WORLD - LIBYA: THE REASONS BEHIND THE CHAOS.....	12
MAPPING THE WORLD - RUSSIA/CHINA: AN UNUSUAL RELATIONSHIP.....	13
MAPPING THE WORLD - RWANDA, A MIRACLE AFTER THE GENOCIDE.....	13
MAPPING THE WORLD - SAUDI ARABIA,TRUE POLITICAL OPENNESS OR MERE WINDOW DRESSING?.....	13
MAPPING THE WORLD - TOMORROW, THE END OF COAL?.....	13
MAPPING THE WORLD - UKRAINE, A CROSSROADS OF INFLUENCE.....	14
MAPPING THE WORLD - UNDERWATER CABLES: THE INVISIBLE WAR.....	14
MAPPING THE WORLD - WHEN SPORT BECOMES POLITICAL.....	14
MAPPING THE WORLD - WHO DEFENDS EUROPE ?.....	14
MAPPING THE WORLD - WINE GOES GLOBAL.....	15

arteSALES

HISTORY
CURRENT AFFAIRS
SOCIETY
GREEN & SCIENCE
NATURE & DISCOVERY
LIFESTYLE & SPORT
ART & CULTURE
PERFORMING ARTS
CINEMA DOCUMENTARY
SHORT CONTENTS
CHILDREN
DRAMA

SALES.ARTE.TV

8, RUE MARCEAU 92785 ISSY-LES-MOULINEAUX CEDEX 9. FRANCE
TEL + 33 1 55 00 77 77
infosales@arteFrance.fr